

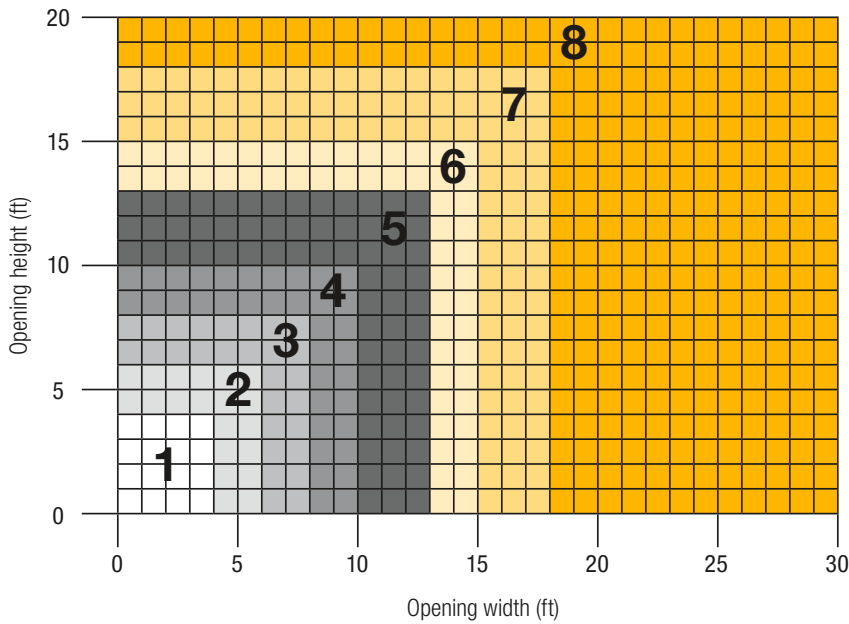
HEAVY-DUTY 5015 ROLLING GRILLE

MODEL C5015



MEASURE THE WIDTH AND HEIGHT OF THE OPENING

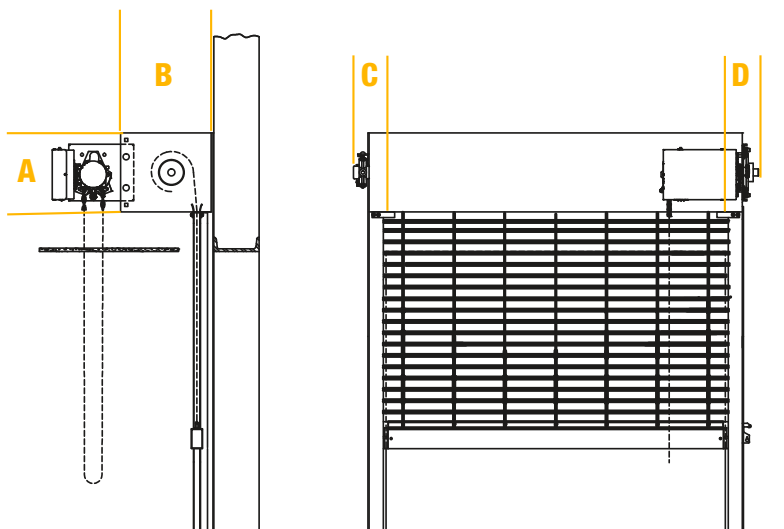
GRILLE SIZE AND AREA



COMPONENT DIMENSIONS

Reference the zone number to view component dimensions for tube motorized doors.

1	14	16	6	6.125
2	15	17	6	6.125
3	16	18	6	6.125
4	17	19	6	6.125
5	18	20	6	6.125
6	19	21	6	6.125
7	20	22	6	6.125
8	21	23	6	6.125
Zone	A	B	C	D



The dimensions featured on this sheet are provided as a guide.

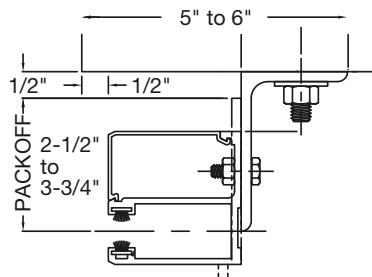
ROLLING GRILLES

HEAVY-DUTY 5015 ROLLING GRILLE

GUIDE CONSTRUCTION OPTIONS

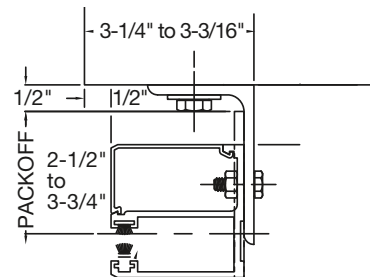
FACE OF WALL Z

Typically used with masonry wall construction, guides are mounted to the interior or exterior side of the wall.



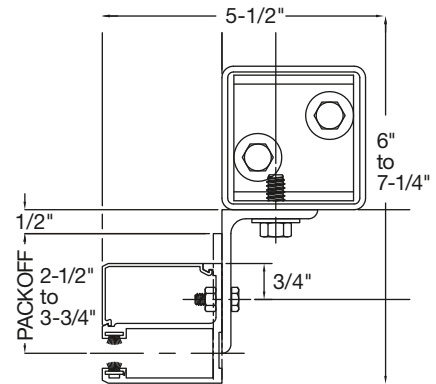
FACE OF WALL E

Typically used with steel jambs, guides are mounted to the interior or exterior side of the wall.



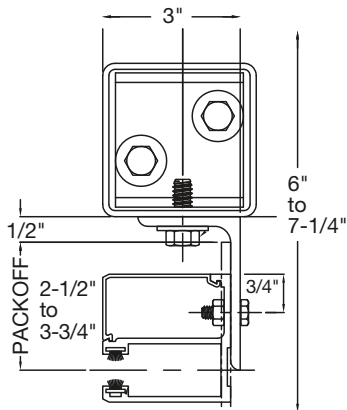
FACE OF WALL Z WITH TUBES

Used when there is uneven or insufficient wall structure, guides are mounted to tubes attached to floor and overhead structure.



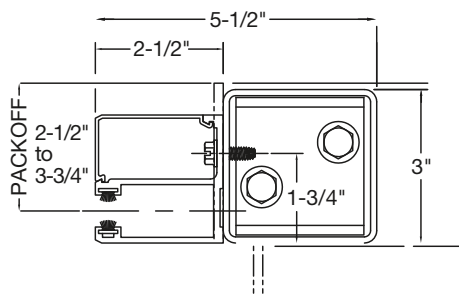
FACE OF WALL E WITH TUBES

Used when there is uneven or insufficient wall structure, guides are mounted to tubes attached to floor and overhead structure.



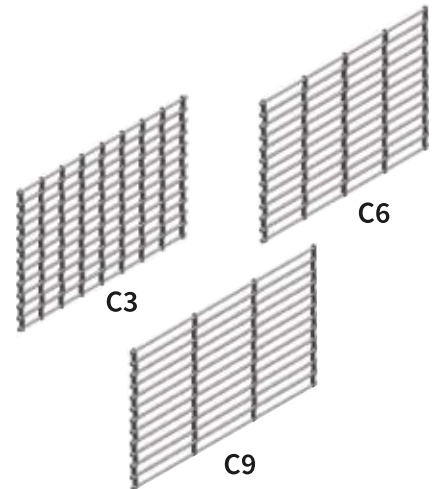
BETWEEN JAMBS WITH TUBES 3x3

Typically used if there's no wall support, and tubes and guides need to be recessed within the wall construction.



CURTAIN DESIGN

3/16" thick links with 5/16" solid rods spaced 1-1/2" apart and 1/2" diameter tube spacers on every rod. Aluminum and stainless steel curtains available.



The dimensions featured on this sheet are provided as a guide.

CUSTOM-DESIGNED SOLUTIONS

Contact our experienced Architectural Design Support Team for help in customizing our products to fit your specific application at www.architectdoorhelp.com.



For more information on these and other Clopay products, visit clopaycommercial.com. Architects and specifiers, visit architectdoorhelp.com.

